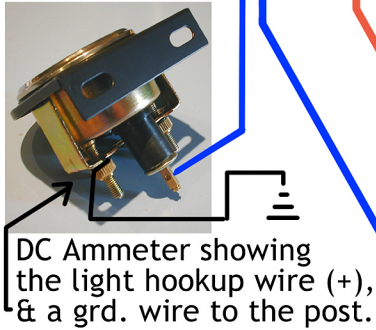
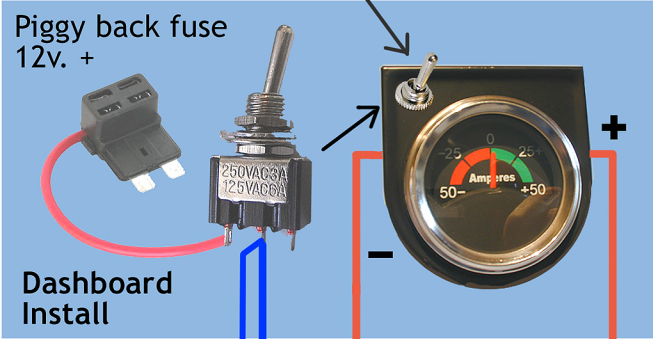


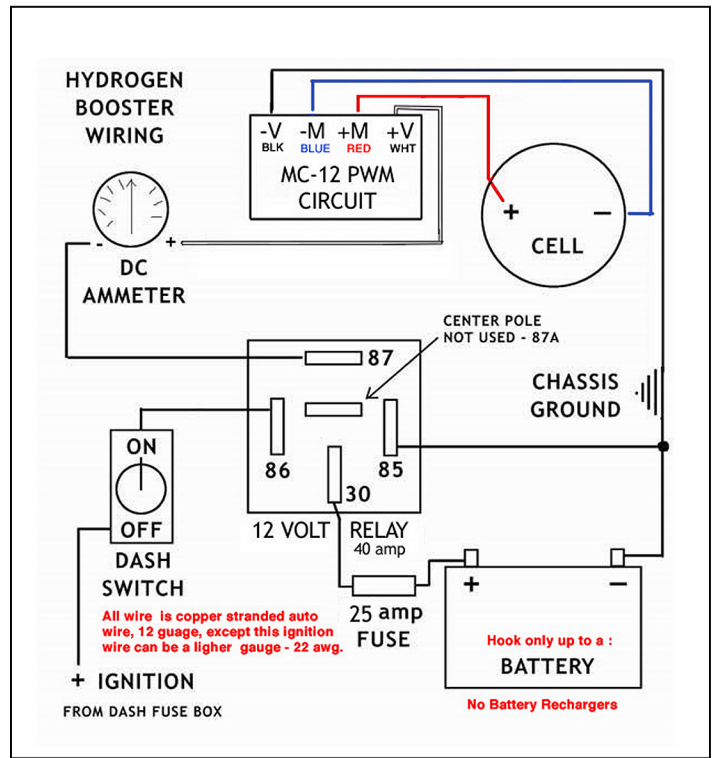
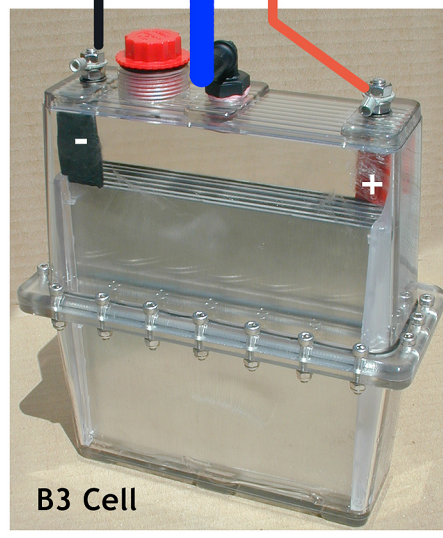
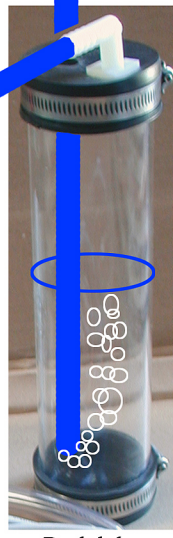
# The Complete B3 Cell Kit Wiring & Hose Installation

Print out this page for a quick reference. We left out the 8 cond. controller cable. In this simple diagram, the amperage can be adjusted at the PWM box under the hood. The controller cable install is on the next page.

Drill a 1/4" hole in the corner of Ammeter bezel for the toggle switch.



Blue = clear vinyl hose for the hydroxy gas output right up to your air filter box. The hydroxy gas comes out to the hole in the rubber cap of the safety/bubbler. The purpose of the bubbler is to clean any electrolyte vapors and stop any spark/flashbacks that doubtfully will occur right before the air filter. Below we have a modified cone air filter, we run out outgas hose right up to the cone. The filter will also catch any electrolyte residue.



Install the cell, PWM & relay close to the battery. All wires should be 12 or 10 gauge copper stranded wire. Blue wire to 86 can be a light wire, 22awg.

Fuse w/ 25 amp blade fuse

Relay

PMW - Cell X siter

B3 Cell mounted near the front grill off to the side, away from the heat of the radiator or under the hood in the coolest spot. Not near the exhaust manifold, or near the coolant water hoses. Away from heat is your goal. Winter applications, then you may want it warmed up. Ideal cell temp. is approx, 86°F